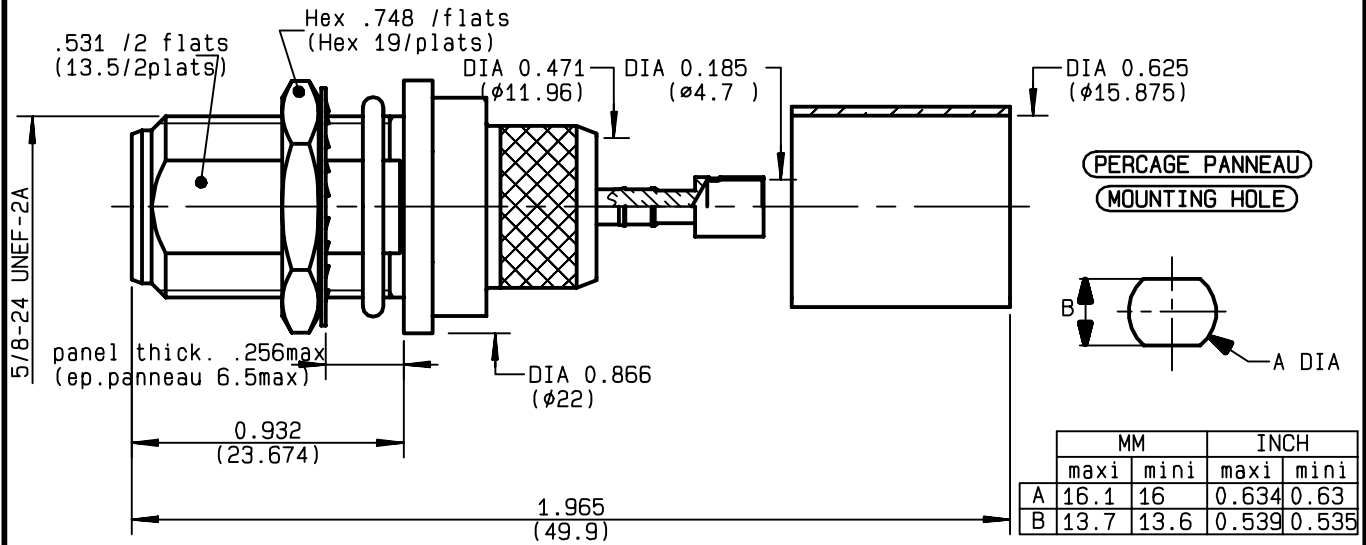


**STRAIGHT BULKHEAD JACK PANEL SEAL
CRIMP TYPE - CABLE 15.2/50 LMR600**

R161.331.400
SERIES N



	MM		INCH	
	maxi	mini	maxi	mini
A	16.1	16	0.634	0.63
B	13.7	13.6	0.539	0.535

NOMINAL IMPEDANCE	50 Ω	CABLES : LMR 600	
FREQUENCY RANGE	0-11 GHz		
TEMPERATURE RATING	-55/+155 °C		
V.S.W.R	1.30 + x F(GHz)Maxi		
RF INSERTION LOSS	0.048 √F(GHz) dB Maxi		
VOLTAGE RATING	1400 Veff Maxi		
DIELECTRIC WITHSTANDING VOLTAGE	2500 Veff Mini		
INSULATION RESISTANCE	5000 MΩMini		
HERMETIC SEAL	NA Atm.cm ³ /s		
LEAKAGE (pressurized only)	IP 65		
MECHANICAL DURABILITY	500 Cycles	OTHERS CHARACTERISTICS	
WEIGHT	gr	CABLE RETENTION	500 N Mini
SPECIFICATION		CENTER CONTACT RETENTION	
		Axial force - mating end	68 N Mini
		Axial force - opposite end	68 N Mini
		Torque	NA cm.N Mini
		RECOMMENDED TORQUES	
		Mating	NA cm.N
		Panel nut	500 cm.N
		Clamp nut	NA cm.N

CONNECTOR PARTS	MATERIALS	FINISH	(all values are given in micrometers)
BODY	BRASS	BBR 2	
OUTER CONTACT	BRASS	BBR 2	
CENTER CONTACT	BERYLLIUM COPPER	GOLD 0.5 OVER NICKEL 2	
INSULATOR	PTFE	-	
GASKET	SILICONE RUBBER	-	
OTHERS PIECES	BRASS	BBR 2	

ISSUE	CREATION DATE	FILE PART-NUMBER
9726A00	27/03/1997	EPC 96-07



QUERIN

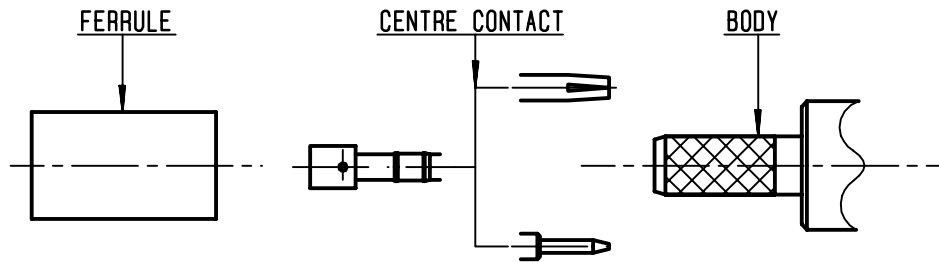
The information given here is subject to change without notice.
Design changes may be in order to improve the product .

Connect to the future



R161.331.400

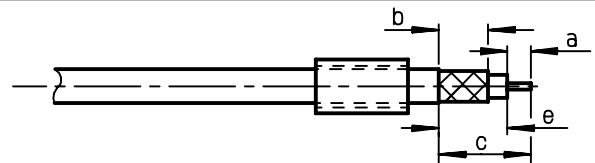
ISSUE 9726A00 SERIES N



①

Slide onto the cable the ferrule .
Strip the cable .

-
-
-

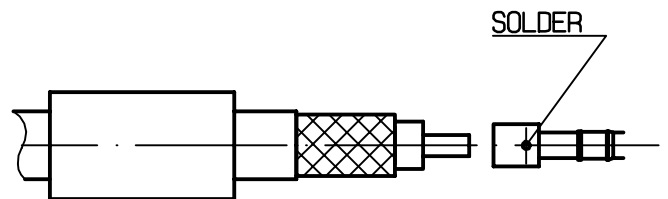


Stripping	a	b	c	d	e
inch	0.157	0.433	0.65	0	0.492
mm	4	11	16.5		12.5

②

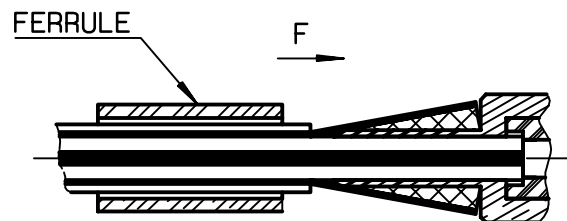
Slide on center contact until it bottoms against cable dielectric .
Solder center contact .

-
-
-
-



③

Fan the braid .
Slide cable into the body until contact snaps into place .
Slide ferrule over the braid .
(In direction F)



④

Crimp the ferrule with crimping tool R 282 293 000 (M22520/5-01)
+ dies R 282 235 166 (DANIELS Y1668)
Hex: 0.610 (15.49)
Cut the excess of braid .

-
-
-
-

